



# Mapleton Water District

## Consumer Confidence Report 2022

Public Water System #41-00507

### Is my water safe?

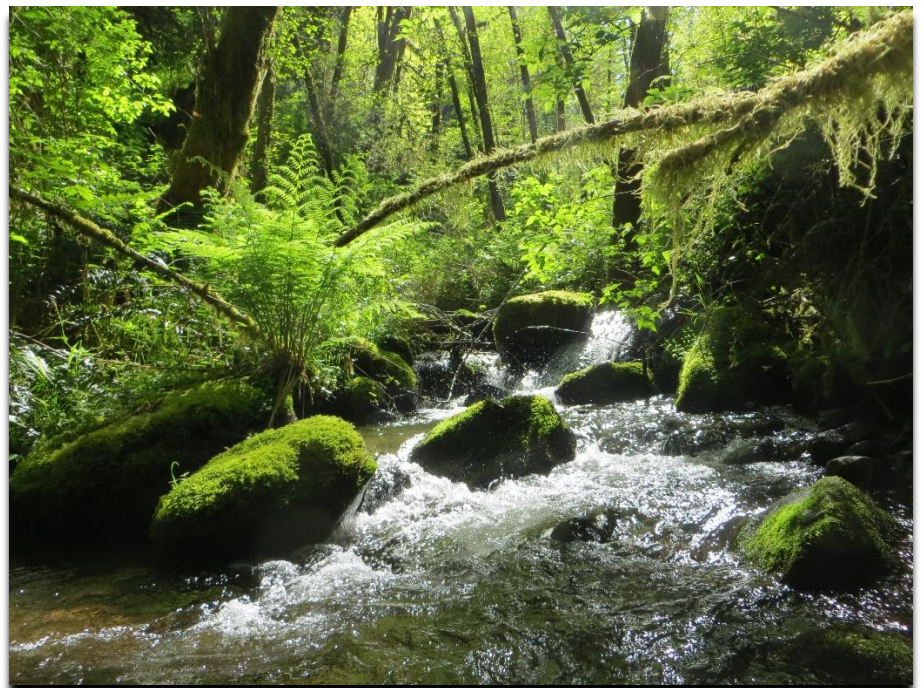
We are pleased to present this year's Annual Water Quality Report (Consumer Confidence Report) as required by the Safe Drinking Water Act (SDWA). This report is designed to provide details about where your water comes from, what it contains, and how it compares to standards set by regulatory agencies. This report is a snapshot of last year's water quality. We are committed to providing you with information because informed customers are our best allies.

### Do I need to take special precautions?

Some people may be more vulnerable to contaminants in drinking water than the general population. Immuno-compromised persons such as persons with cancer undergoing chemotherapy, persons who have undergone organ transplants, people with HIV/AIDS or other immune system disorders, some elderly, and infants can be particularly at risk from infections. These people should seek advice about drinking water from their health care providers. EPA/Centers for Disease Control (CDC) guidelines on appropriate means to lessen the risk of infection by *Cryptosporidium* and other microbial contaminants are available from the Safe Water Drinking Hotline (800-426-4791).

### Where does my water come from?

The Mapleton Water District treatment plant is fed entirely by Berkshire Creek which then feeds into the Siuslaw River. The streams that feed Berkshire Creek are contained entirely within US Forest Service land.



## **Source water assessment and its availability**

The Oregon Department of Environmental Quality (DEQ) conducted a Source Water Assessment which was published in 2001. In this assessment they found no potential sources of contamination within the protection area. The protection area is located entirely within public forestland. In 2017 the DEQ published an updated Source Water Assessment for the district which indicated no significant changes from the 2001 assessment. Copies of both the initial assessment and the update are available for review at the Mapleton Water District office. They are also available on the Oregon DEQ's online database: <https://www.deq.state.or.us/wq/dwp/swrpts.asp>.

## **Why are there contaminants in my drinking water?**

Drinking water, including bottled water, may reasonably be expected to contain at least small amounts of some contaminants. The presence of contaminants does not necessarily indicate that water poses a health risk. More information about contaminants and potential health effects can be obtained by calling the Environmental Protection Agency's (EPA) Safe Drinking Water Hotline (800-426-4791). The sources of drinking water (both tap water and bottled water) include rivers, lakes, streams, ponds, reservoirs, springs, and wells. As water travels over the surface of the land or through the ground, it dissolves naturally occurring minerals and, in some cases, radioactive material, and can pick up substances resulting from the presence of animals or from human activity: microbial contaminants, such as viruses and bacteria, that may come from sewage treatment plants, septic systems, agricultural livestock operations, and wildlife; inorganic contaminants, such as salts and metals, which can be naturally occurring or result from urban stormwater runoff, industrial, or domestic wastewater discharges, oil and gas production, mining, or farming; pesticides and herbicides, which may come from a variety of sources such as agriculture, urban stormwater runoff, and residential uses; organic Chemical Contaminants, including synthetic and volatile organic chemicals, which are by-products of industrial processes and petroleum production, and can also come from gas stations, urban stormwater runoff, and septic systems; and radioactive contaminants, which can be naturally occurring or be the result of oil and gas production and mining activities. In order to ensure that tap water is safe to drink, EPA prescribes regulations that limit the amount of certain contaminants in water provided by public water systems. Food and Drug Administration (FDA) regulations establish limits for contaminants in bottled water which must provide the same protection for public health.

## **How can I get involved?**

The Mapleton Water District Board of Commissioners meets regularly on the second Monday of each month at 6:00 p.m. These meetings are held at the Mapleton Lions Club Kitchen unless otherwise noted and members of the public are encouraged to attend. The board is also in the process of developing several committees. Interested citizens should attend one of the board's regular meetings and notify the district.

## **Description of Water Treatment Process**

Your water is treated by filtration and disinfection. Filtration removes particles suspended in the source water. Particles typically include clays and silts, natural organic matter, iron and manganese, and microorganisms. Your water is also treated by disinfection. Disinfection involves the addition of chlorine or other disinfectants to kill bacteria and other microorganisms (viruses, cysts, etc.) that may be in the water. Disinfection is considered to be one of the major public health advances of the 20th century.

## Monitoring and reporting of compliance data violations

For membrane filtration: Indirect integrity testing does not meet requirements under -0036(5)(d)(C) - Deficiency identified 8/18/2021 - Resolved 1/5/2022.

## Record keeping violations

Master plan not current (300 con.) - Deficiency identified 8/18/2021 - Unresolved. Record keeping only. No health effects.

Annual CCR not submitted (CWS) - Deficiency identified 8/18/2021 - Resolved 2/22/2022. Record keeping only. No health effects.

## Additional Information for Lead

If present, elevated levels of lead can cause serious health problems, especially for pregnant women and young children. Lead in drinking water is primarily from materials and components associated with service lines and home plumbing. Mapleton Water District is responsible for providing high quality drinking water but cannot control the variety of materials used in plumbing components. When your water has been sitting for several hours, you can minimize the potential for lead exposure by flushing your tap for 30 seconds to 2 minutes before using water for drinking or cooking. If you are concerned about lead in your water, you may wish to have your water tested. Information on lead in drinking water, testing methods, and steps you can take to minimize exposure is available from the Safe Drinking Water Hotline or at <http://www.epa.gov/safewater/lead>.

---

## Water Quality Data Table

In order to ensure that tap water is safe to drink, EPA prescribes regulations which limit the amount of contaminants in water provided by public water systems. The table below lists all of the drinking water contaminants that we detected during the calendar year of this report. Although many more contaminants were tested, only those substances listed below were found in your water. All sources of drinking water contain some naturally occurring contaminants. At low levels, these substances are generally not harmful in our drinking water. Removing all contaminants would be extremely expensive, and in most cases, would not provide increased protection of public health. A few naturally occurring minerals may actually improve the taste of drinking water and have nutritional value at low levels. Unless otherwise noted, the data presented in this table is from testing done in the calendar year of the report. The EPA or the State requires us to monitor for certain contaminants less than once per year because the concentrations of these contaminants do not vary significantly from year to year, or the system is not considered vulnerable to this type of contamination. As such, some of our data, though representative, may be more than one year old. In this table you will find terms and abbreviations that might not be familiar to you. To help you better understand these terms, we have provided the definitions below the table.

| Contaminants  | MCLG or MRDLG | MCL, TT, or MRDL | Detect In Your Water | Range |      | Sample Date | Violation | Typical Source  |
|---|---------------|------------------|----------------------|-------|------|-------------|-----------|---|
|   |               |                  |                      | Low   | High |             |           |   |
| <b>Disinfectants &amp; Disinfection By-Products</b>   |               |                  |                      |       |      |             |           |   |
| (There is convincing evidence that addition of a disinfectant is necessary for control of microbial contaminants) |               |                  |                      |       |      |             |           |   |
| Haloacetic Acids (HAA5) (ppb)   | NA            | 60               | 55.3                 | NA    | NA   | 2022        | No        | By-product of drinking water chlorination   |
| TTHMs [Total Trihalomethanes] (ppb)   | NA            | 80               | 77.6                 | NA    | NA   | 2022        | No        | By-product of drinking water disinfection   |
| <b>Inorganic Contaminants</b>   |               |                  |                      |       |      |             |           |   |
| Nitrate [measured as Nitrogen] (ppm)  | 10            | 10               | .132                 | NA    | NA   | 2022        | No        | Runoff from fertilizer use; Leaching from septic tanks, sewage; Erosion of natural deposits |

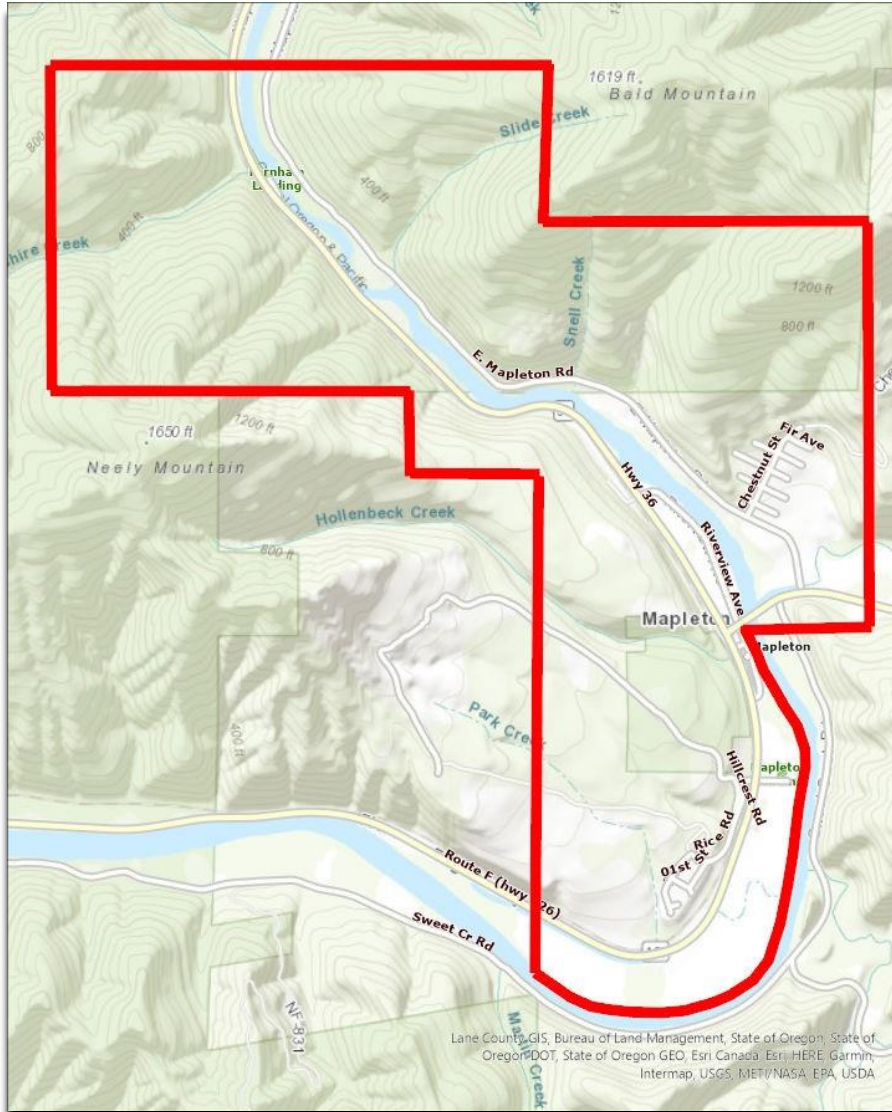
| Unit Descriptions |  |
|-------------------|--|
| Term              | Definition   |
| ppm               | ppm: parts per million, or milligrams per liter (mg/L) |
| ppb               | ppb: parts per billion, or micrograms per liter (µg/L) |
| NA                | NA: not applicable                                     |
| ND                | ND: Not detected                                       |
| NR                | NR: Monitoring not required, but recommended.          |

| Important Drinking Water Definitions |   |
|--------------------------------------|---|
| Term                                 | Definition  |
| MCLG                                 | MCLG: Maximum Contaminant Level Goal: The level of a contaminant in drinking water below which there is no known or expected risk to health. MCLGs allow for a margin of safety.  |
| MCL                                  | MCL: Maximum Contaminant Level: The highest level of a contaminant that is allowed in drinking water. MCLs are set as close to the MCLGs as feasible using the best available treatment technology.   |
| TT                                   | TT: Treatment Technique: A required process intended to reduce the level of a contaminant in drinking water.  |
| AL                                   | AL: Action Level: The concentration of a contaminant which, if exceeded, triggers treatment or other requirements which a water system must follow.   |
| Variances and Exemptions             | Variances and Exemptions: State or EPA permission not to meet an MCL or a treatment technique under certain conditions.   |
| MRDLG                                | MRDLG: Maximum residual disinfection level goal. The level of a drinking water disinfectant below which there is no known or expected risk to health. MRDLGs do not reflect the benefits of the use of disinfectants to control microbial contaminants. |
| MRDL                                 | MRDL: Maximum residual disinfectant level. The highest level of a disinfectant allowed in drinking water. There is convincing evidence that addition of a disinfectant is necessary for control of microbial contaminants.                              |
| MNR                                  | MNR: Monitored Not Regulated  |
| MPL                                  | MPL: State Assigned Maximum Permissible Level   |



**For more information please contact:**

Contact Name: Jordan Walker  
Street Address: 88151 Riverview Avenue  
Mailing Address: PO Box 435  
Mapleton, OR 97453  
Phone: 541-268-4348



**MAPLETON WATER DISTRICT  
BOARD OF COMMISSIONERS**

**POSITION 1  
ART DONNELLY**

**POSITION 2  
NANCY PETTIBON**

**POSITION 3  
JULIE DORAN-LEE**

**POSITION 4  
VANESSA WEST**

**POSITION 5  
SHARON KELLY**

Lane County GIS, Bureau of Land Management, State of Oregon, State of Oregon DOT, State of Oregon GEO, Esri, Canada, Esri, HERE, Garmin, Intermap, USGS, METI/NASA, EPA, USDA